

FUSSEN

Specifications Intraoral Sensor

Active Area Size1= 20X30mm Size2= 26X36mm	Dimensions Size1:25.4×36.8×4.5mm Size2:30.4×41.9×4.5mm
Resolution 1200X1650	Pixel Size 20*20µm
Detector CMOS APS	Gray Scale 14bit
Cable Length 2.7m	True Resolution 20 PL/mm



Intraoral Sensor



Fussen Technology Co.,Ltd

📍 1F,3#Building ,Tongfuyu Industrial Zone, Taoyuan Street,Nanshan District, Shenzhen,China

☎ Tel:+86 755 2167 0890 - 813

🌐 Website: www.fussengroup.com

✉ Email:sales@fussenct.com



Easy to use

Special connection, easy to use,
positioning precisely when biting, to get the image easily



Ergonomics

Rounded Corner & Curved



edge

Ultra-slim: 4.4 mm

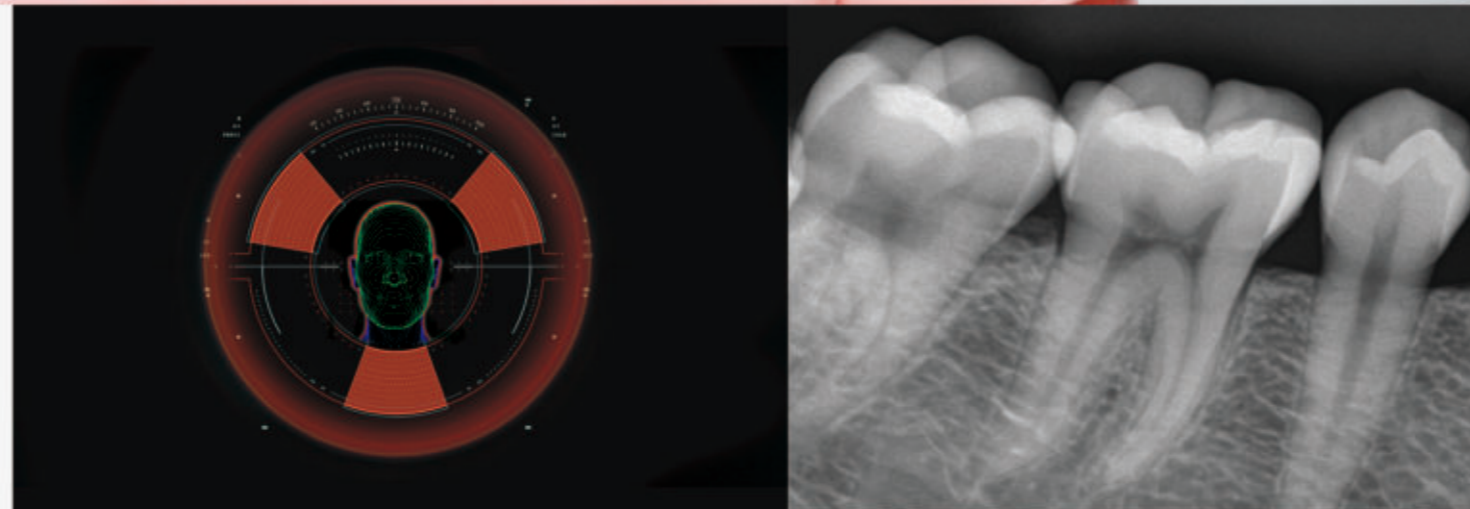
Performance

AED Technology

- Compatible with almost all DC and AC X-ray generator

CSI Technology

- Less dosis with more resolution



Durability

- Anti-drop 1.5 m
- 80,000 Bending test
- 60,000 times exposure without image quality lose
- IP 68