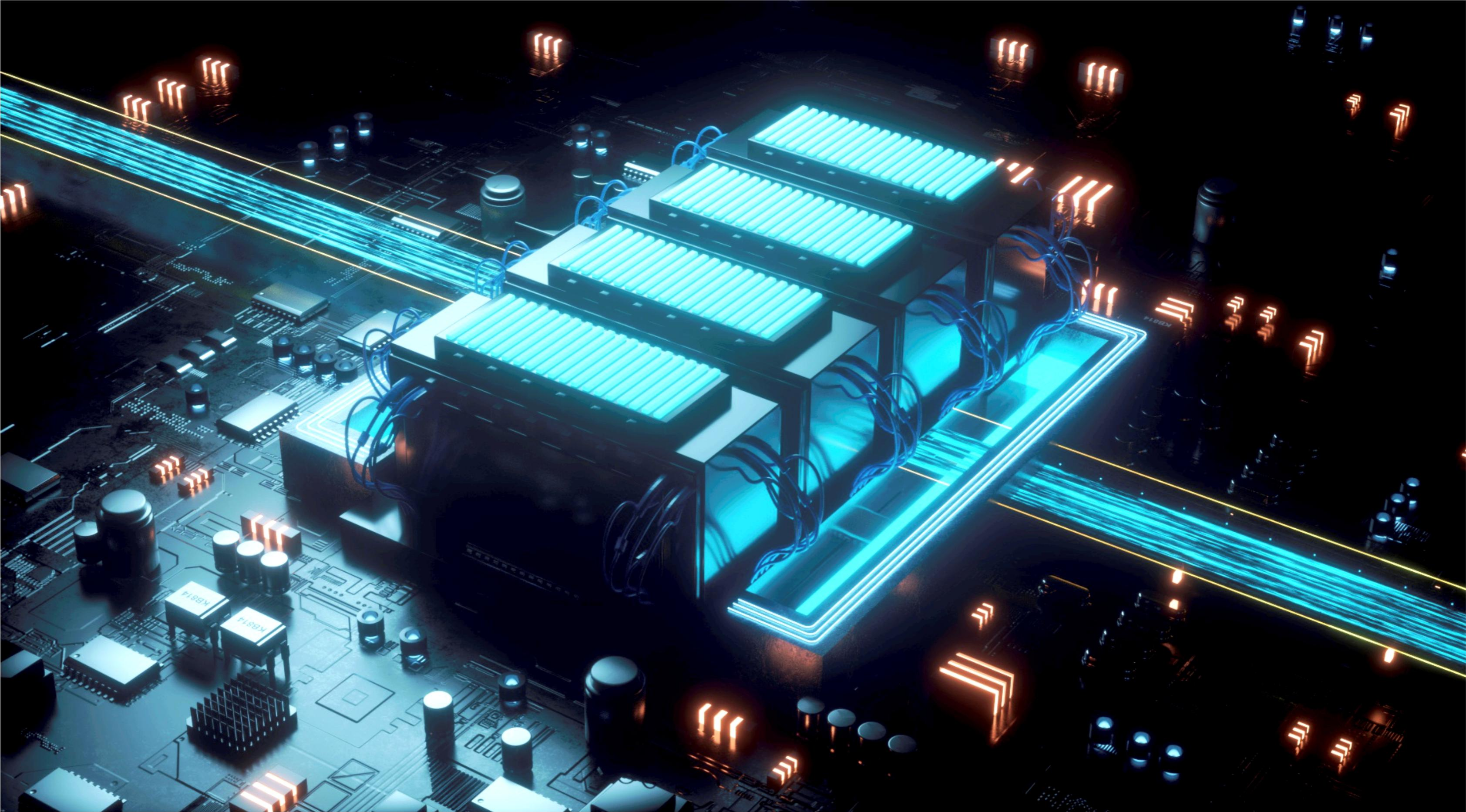




Ai Ray

Woodpecker First
Dental X-Ray Device





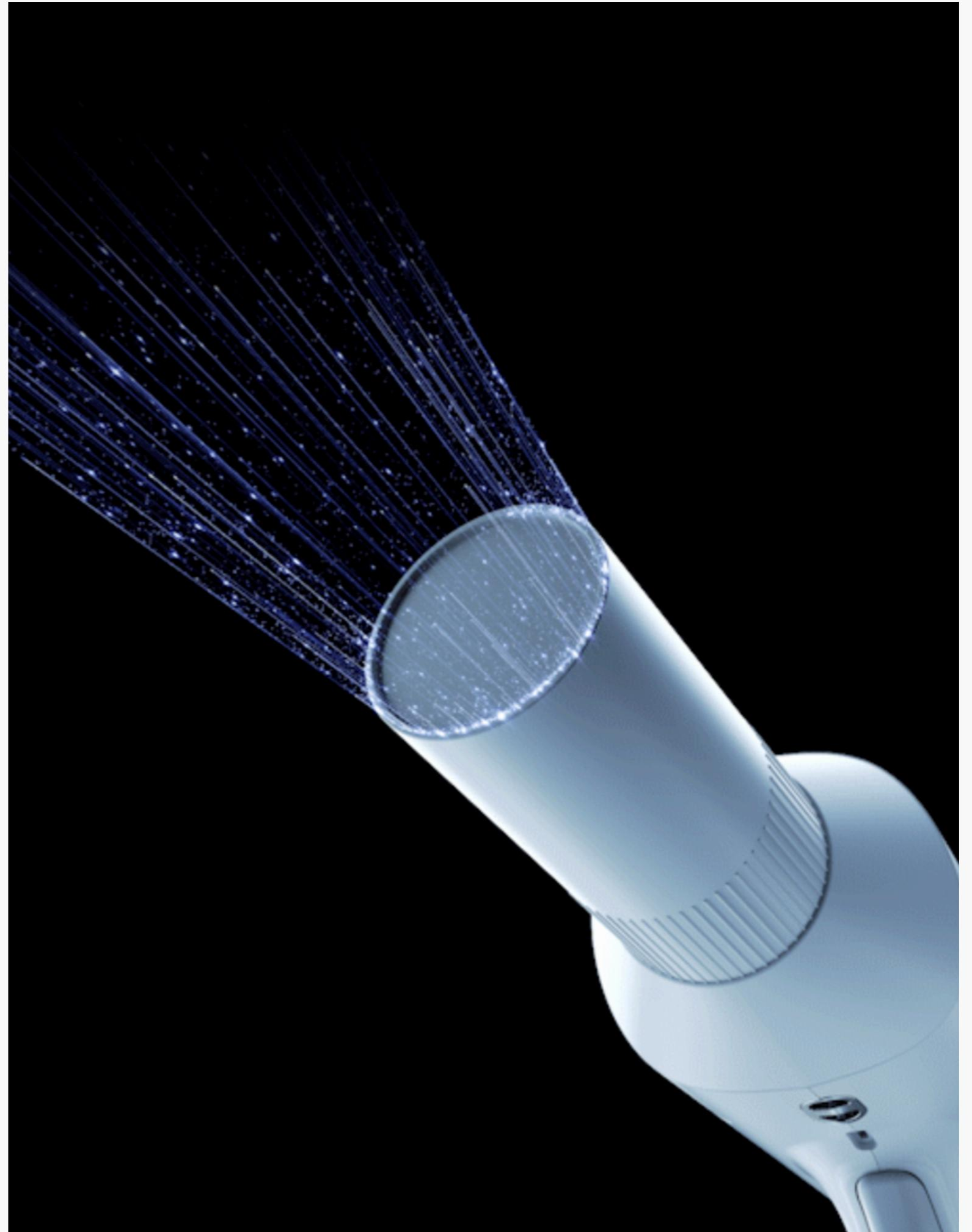
SUPER HIGH PERFORMANCE
HIGH EFFICIENCY

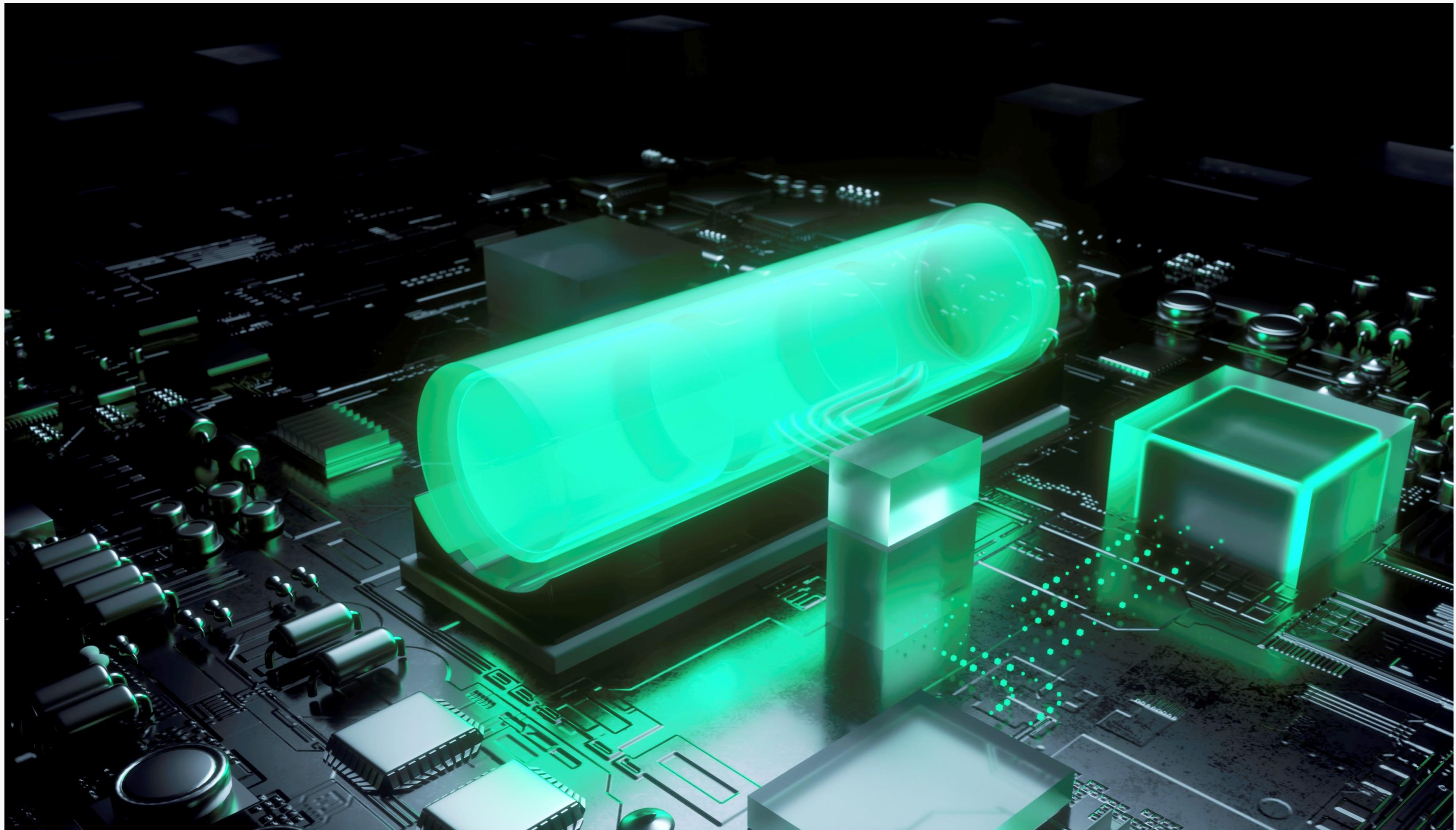
Emission power up to 210W
Shorter exposure time with high power
Achieve stable, accurate and quick photography of
different tooth positions

DETAILED DENTAL FILMS MORE RELIABLE

0.4mm focus X-ray tube

Provide high-quality and clearer image
for various diagnostic needs





HIGH-CAPACITY BATTERY
LONGER ENDURANCE

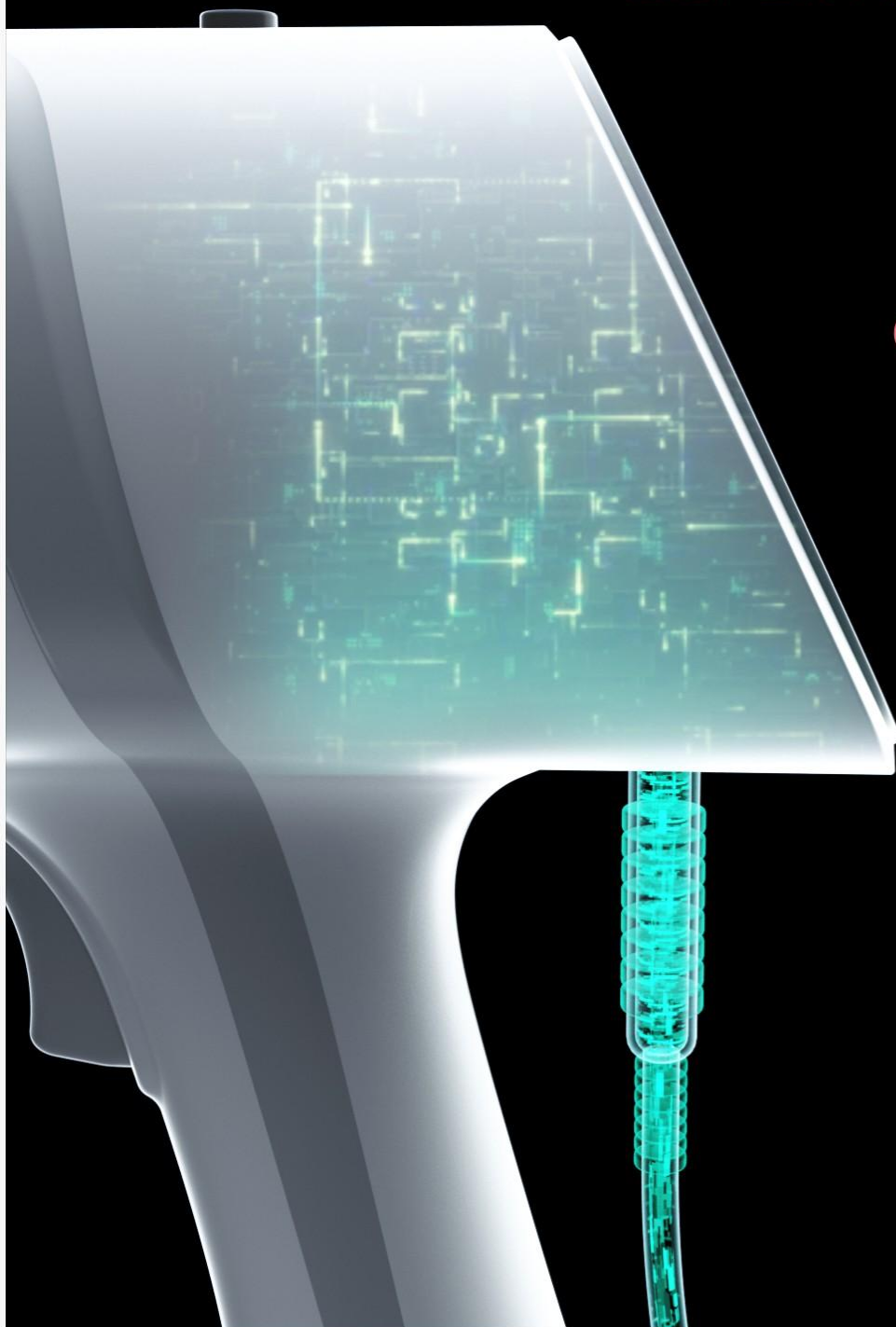
15000mAh high-capacity power lithium battery delivers a longer endurance.
More than **1,500** dental films can be taken under a full charge.

80W

SUPER FAST CHARGING

2.8-INCH

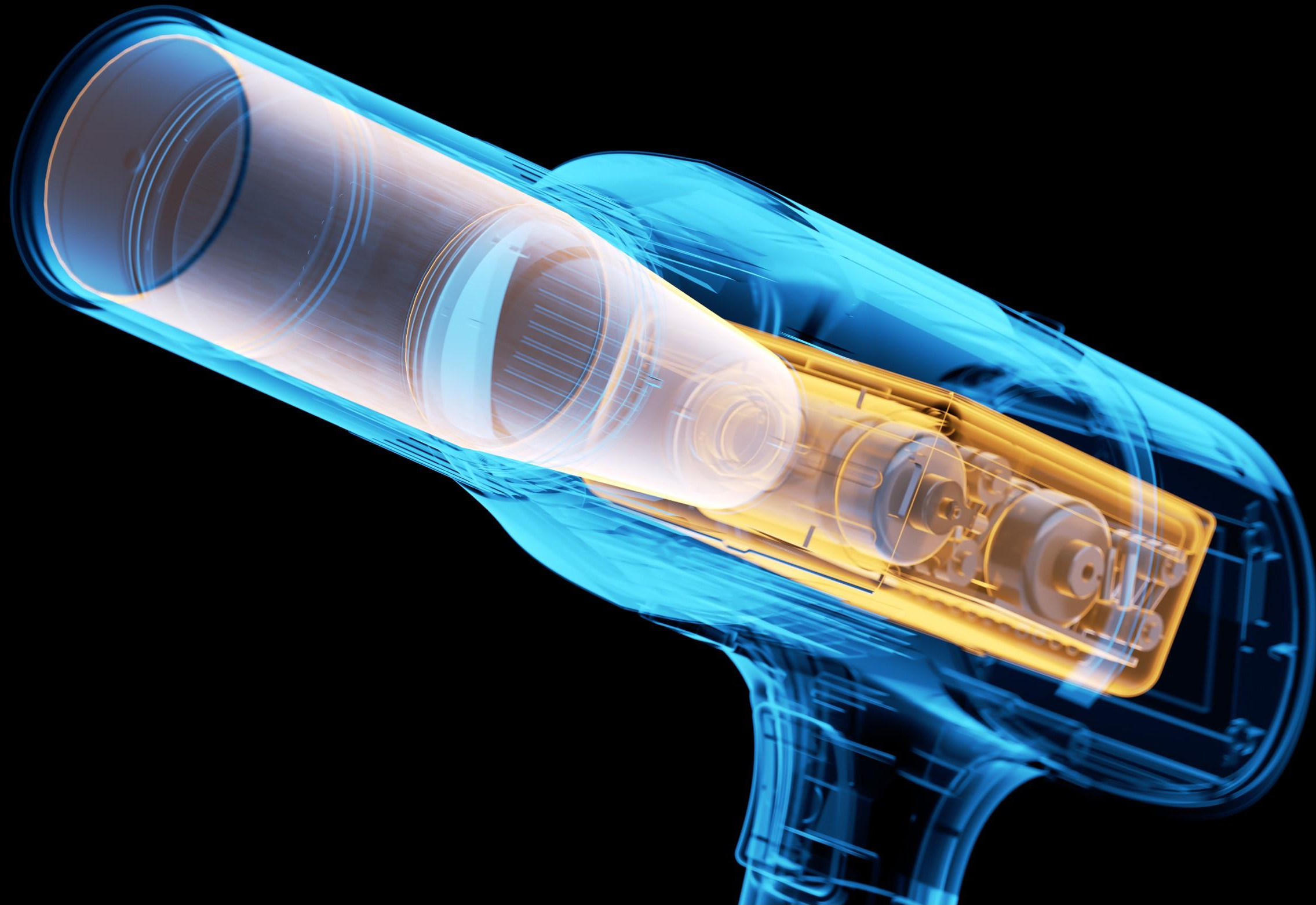
CAPACITIVE TOUCH SCREEN



Over 110

Dental films can be taken after **5mins** of charging.

Enable clear and concise display
Abandon the traditional physical button,
beautifying the machine's appearance



**MAXIMUM EFFICIENCY
AND SAFETY**

Constant DC high-frequency high voltage and current output ensure that X-ray output is not affected by battery voltage fluctuations

Unique internal design and lead shield
Efficiently minimize the X-ray leakage
Maximize the protection of operators from ionizing radiation



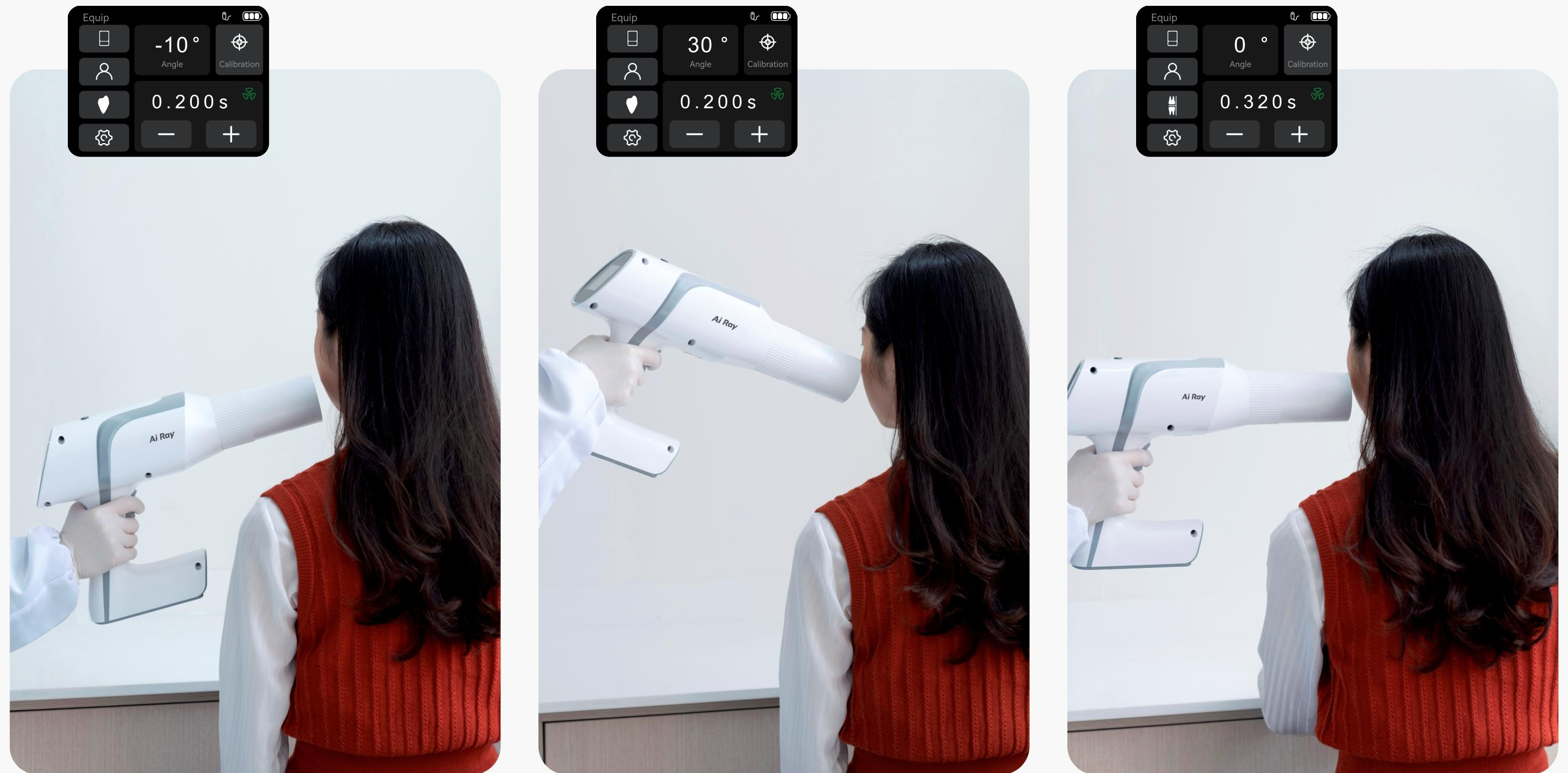
VARIOUS PHOTOGRAPHING METHODS

EASY TO OPERATE

Built-in remote control receiving circuit and holder interface,
can be connected to the wired remote controller and triangle holder.

A variety of photographing methods available, ensuring safer photographing and easier operation.

ANGLE CORRECTION



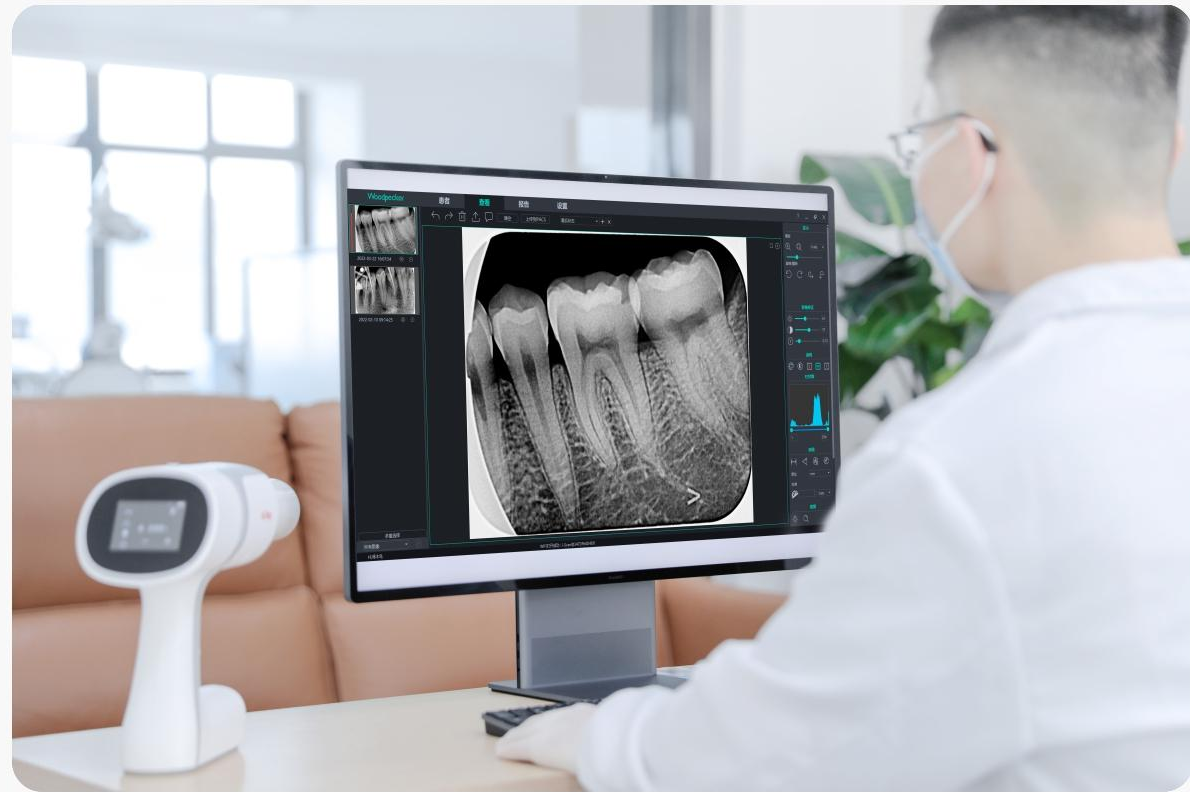
Corresponding photographing angle reference values provided for different tooth positions

During the photography, keep the patient in the correct sitting position and adjust the dental X-ray device to obtain the best photographing angle and improve the efficiency.

COMFORTABLE TO HOLD

Reasonably-designed exposure switch avoids holding instability, greatly easing the user's operation.









Guilin Woodpecker Medical Instrument Co., Ltd.
Information Industrial Park, Guilin National High-Tech
Zone, Guilin, Guangxi, 541004 P. R. China
Sales Dept.: +86-773-5873196
E-mail: woodpecker4@glwoodpecker.com
Website: <http://www.glwoodpecker.com>



MedNet EC-Rep GmbH
Borkstrasse 10·48163 Muenster·Germany

